

Fifth Annual Minnesota Mobile Mental Health Crisis Response Summit

Compassion. Connection. Community.

Tuesday, August 6 & Wednesday, August 7, 2024



This summit has been approved for up to 32 CEHs
from the MN Board of Social Work.

Greetings!

The Minnesota Mobile Mental Health Crisis Response Summit has become a prominent annual event that brings together leading professionals, experts, and innovators to discuss the latest trends, challenges, and advancements in mental health crisis response. This year's summit promises to be an exceptional gathering featuring inspiring keynote speakers, thought-provoking discussions, and workshops.

This year, we are celebrating Compassion. Connection. Community. We hope you are excited for our Tuesday, August 6th kickoff! We have a great lineup of Keynotes and Workshops.

Event goals:

Provide top-notch training to mobile mental health crisis responders and their partners around the state to ensure that people experiencing a mental health crisis receive the best possible care. Elevate the field of mobile mental health crisis response as a sustainable, skilled profession. Build a well-rounded body of on-line training content that mental health crisis workers can access 24/7. Knowing that many of you are seeking more depth of content, we have a mix of entry level and more advanced offerings.

Find out more here:

MetrCCs Summit Landing Page

Here: <https://macmh.org/metrccs-summit-2024/>

Password: metrccs24

Handouts will be available on this page as they come available

If you need any assistance throughout the summit, please email MetrCCSSummit@MACMH.org

Important Things to Know

Workshop Access

We will be using the Zoom platform to host the summit. Zoom links will be sent out closer to the event date

You do not need a Zoom account to participate; simply join the Summit via the provided link or over the phone. As you join each workshop, you may be prompted to run Zoom Desktop Client or upgrade to the latest version of Zoom. Follow the automatic prompts to download the application or read this [article](#) to help guide your process. Additionally, for the best user experience, use Chrome as your browser.

Webinar Recordings

Recordings of each workshop will be available after the Summit has concluded.

CEHs

This summit has been approved for up to 32 continuing education hours (CEHs) from the MN Board of Social Work. For other MN Boards, please submit CEHs independently. CEHs will be available after the summit's completion.

Levels

Keynote: Of interest to all attendees. Content is especially motivational or thought-provoking.

General level: Covers crisis response basics and terminology.

Innovation: Designed to highlight new learnings, strategies or lines of thinking.

Advanced level: For experienced crisis responders diving deep into a topic.

Questions

Please contact us at MetrCCSSummit@MACMH.org.



Schedule

Tuesday, August 6

- 9:00 a.m. Breakfast, Welcome and Keynote
Crisis Clinicians: Humans Expected to be Superheroes
Presented by Michelle Meuthing | **Keynote** | [Zoom Link](#)
- 10:30 a.m. Break
- 10:45 a.m. Concurrent Workshops
1. Family Response and Stabilization Services with Ashley Andresen, Samira Adam & Asad Dahir | **General level** | [Zoom Link](#)
2. Psychological aspects of mass casualty trauma with David Swenson | **General level** | [Zoom Link](#)
3. How Can We Be Helpful If We Aren't Feeling It? Six Fundamental Skills for Effective and Compassionate Helping with Alan O'Malley-Laursen | **Advanced level** | [Zoom Link](#)
- 12:15 p.m. Lunch Break | [Zoom Link](#)
- 1:00 p.m. Concurrent Workshops
4. Supporting Generations of Crisis Support Workers, Touting Self-Care is No Longer Enough with Jillian Lafferty | **Innovation** | [Zoom Link](#)
5. Effective interventions for helping people with frequent police contact with Krismarie Claflin, Marcus Smith & Patti Molitor | **Advanced level** | [Zoom Link](#)
6. ~~Reducing Barriers to Accessing Inpatient Care with Nancy Steffen | General level~~
- 1:45 p.m. Break
- 2:00 p.m. Concurrent Workshops
7. The Painful Reality of Increased Anti-Semitism: Best Practices for Supporting Jews in Crisis with Leah Persky & Natalie Oleson | **General level** | [Zoom Link](#)
8. It's not illegal to be mentally ill: A partnership to close the gap in the system with Amber Barnes & Jen Peterson | **General level** | [Zoom Link](#)
9a. Mental Fitness for Crisis Responders (part 1) with Sandi Lindgren | **General Level** | [Zoom Link](#)
- 3:00 p.m. Break
- 3:30 p.m. Concurrent Workshops
9B. Mental Fitness for Crisis Responders (part 2) with Sandi Lindgren *attendance at part 1 is required for participation in this session | **General level** | [Zoom Link](#) | [Mandatory Pre-Assessment](#)
10. The Importance of Peer Collaboration in Crisis Response with Jacinta Moss & Totianna Poe | **Innovation** | [Zoom Link](#)
11. Embedding Suicide Assessments into Affirming and Empathetic Conversations with Kelsey Yale | **General level** | [Zoom Link](#)
- 5:00 Closing



Wednesday, August 7

- 9:00 a.m. Breakfast, Welcome and Keynote
What's happening with kids in schools and how can Crisis Response help
Presented by Mark Sander & True Thao | **Keynote** | [Zoom Link](#)
- 10:30 a.m. Break
- 10:45 a.m. Concurrent Workshops
12. Clinical Considerations: Working with Hispanic clients in crisis with Charles Jones | **General level** | [Zoom Link](#)
13. Restorative Self-Care & Secondary Trauma with Danielle Thornton & Kabao Yang | **General level** | [Zoom Link](#)
14. Practicing Cultural Humility in Crisis Response with Hannah Dufek | **General level** | [Zoom Link](#)
- 11:45 a.m. Lunch Break | [Zoom Link](#)
- 12:30 p.m. Concurrent Workshops
15. Shifting Thoughts: A Collective Journey Inward with Breanna McMullen | **General level** | [Zoom Link](#)
16. How to Spot Covert Abuse & Manipulation with Heather Boorman-Morris & Antwan Morris | **General level** | [Zoom Link](#)
17. What A Shame! Utilizing Ancient Wisdom for Resilience with Tascha Just | **General level** | [Zoom Link](#)
- 2:30 p.m. Break
- 2:45 p.m. Concurrent Workshops
18. The Trauma-Informed Professional: Masterfully turn work-life stress into purpose & peace with Kathryn Magnusson | **General level** | [Zoom Link](#)
19. What Little Ones Really Need in a Crisis Situation with Michele Benyo | **General level** | [Zoom Link](#)
20. Trauma-Responsive Mind-Body Practices for Safety and Connection with Kathy Flaminio & Chrissy Mignogna | **Innovation** | [Zoom Link](#)
- 3:30 p.m. Break
- 3:45 p.m. Afternoon Keynote
From self-care to community care: cultivating compassion for ourselves and each other in crisis work | **Keynote** | [Zoom Link](#)
Presented by Alex Iantaffi
- 4:55 Farewell
- 5:00 Closing





Tuesday, August 6 | Breakfast Keynote

Crisis Clinicians: Humans Expected to be Superheroes

Michelle Meuthing is a long time crisis clinician who has passion for training those who respond on the frontlines when someone is experiencing a crisis. She is a subject matter expert for SAMHSA's Policy Research Academy, and continues to learn while she teaches and helps communities develop new crisis and co-response programs.



Wednesday, August 7 | Breakfast Keynote

How Can Schools, School Mental Health and Crisis Response Support Youth and Families?

Dr. Mark Sander is a Senior Clinical Psychologist for Hennepin County and the Director of School Mental Health for Hennepin County and the Minneapolis Public Schools. He also is the Co-Director of the Midwest Center for School Mental Health. He has spent over 20 years working with schools, school districts, mental health providers, caregivers, local and state government to help them implement high quality comprehensive school mental health programs.



True Thao is a licensed clinical social worker with 34 years of clinical experience. He is the current supervisor for the Adult Crisis Stabilization Program and Project Assist at Ramsey County. Prior to joining Ramsey County, True was the founder and principal therapist at True Thao Counseling Services (TTCS). Established in 1997, TTCS has been a prominent mental health provider with the immigrant and refugee communities in MN. Since 2018, True had been a Community Partner with the St. Paul Public Schools and Ramsey County Children's Mental Health Collaborative where he provided mental health services onsite at various schools to diverse students from elementary to high school.



Wednesday, August 7 | Afternoon Keynote

From Self-care to Community Care: Cultivating Compassion for Ourselves and Each Other in Crisis Work

Alex Iantaffi, PhD, MS, SEP, CST, CST-S, LMFT (they/he/lui) is an award-winning author, family therapist, WPATH certified gender specialist, AASECT certified sex therapist, Somatic Experiencing, a practitioner, and clinical supervisor. They are a trans masculine, nonbinary, bi queer, neurodivergent, disabled, Italian immigrant. Alex is the author of "Gender Trauma: healing cultural, social, and historical gendered trauma".



MetrCCs Summit Planning Committee

Christie Wisk Christy Ferrington Danielle Alida Samantha Axt Sarah Richter Sherray Greene



Brina Ellison is the Suicide Prevention Regional Coordinator at Stellher Human Services. She provides services in Becker, Beltrami, Clearwater, Hubbard, and Lake of the Woods counties. With her experience in community outreach and training development, Brina has been dedicated to helping communities by promoting mental health awareness and improved practices. For the past six years, she has led a mobile crisis team and provided direct crisis services. Brina's passion lies in making a positive impact on individuals' and families' lives, offering support during challenging times, and fostering a safer community for all.



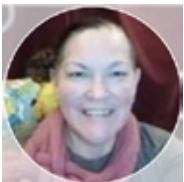
Kim Vanderwall formed Vanderwall Consulting in 1996. She has coordinated Metro Children's Crisis Services (MetrCCS) since 2010, facilitating collaboration, promotion and training for children's mobile crisis response teams and their partners in the seven-county metro area. With other clients, she specializes in strategic planning and board development. She co-authored *Coloring Outside the Box: One Size Does Not Fit All in Nonprofit Governance*, and *Ten Dimensions that Shape your Board*. Previous experience includes YWCA of Minneapolis Director of Development; work in other youth, family and health-related organizations; and Peace Corps Paraguay. Kim has an MA in Human Development.



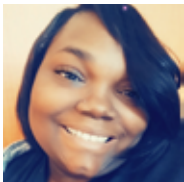
Merri McCarthy, MSW LICSW, is the Team Lead for Mobile Crisis with Sanford Health in Bemidji. Merri has served on the mobile crisis team for over 10 years. Merri has experience providing individual, couples, and group services. She has experience in working with people who have severe and persistent mental illness, crisis services in the community and emergency room settings.



Ms. Sarah Washington is the parent of four children and has been an advocate for her own family and many others throughout her career, specializing in special education and mental health supports. She is experienced with crisis services and has served on the Metro Children's Crisis Response (MetrCCS) Leadership Team since 2013. She has also served on the Hennepin County Parent Catalyst Leadership Group. Ms. Washington has held many roles over the years within Minneapolis Public Schools (MPS), including the District Mental Health Team, the Special-Education Early Childhood SLT, Co-Chair of the Special Education Advisory Council/chair for ECFE, and as a Parent Evaluator. She currently serves as the board president for Watercourse Counseling Service.



Sara Danielson: my primary role is to help individuals/families navigate complex systems in which they are involved and ensure their voices are heard. I bring compassion that is necessary for these individuals/families to work toward healing and hope. Through my lived experiences, I can empower the individuals/families I work with to gain their own independence and begin to trust their own intuition and skills.



Hello, I am **Jacinta Moss**. I am a parent to two beautiful children, but many more are in my heart. I am an auntie to 29 nieces and nephews and 8 great aunts. I am a certified Family Peer Specialist and Peer Recovery Specialist. I am the biggest advocate for all in my family and my community. I have been part of Metro Children's for the last 4 years and the Leadership team. I am the Board chair of Ramsey County Children's Mental Health Collaborative (RCCMHC) and also the co-chair for the family service committee for the last 6 years. Additionally, I have worked with MICH and other state agencies to work on a justice plan as a consultant for the last 2 years. I also work at the RCCMHC as a Family Coach. I am also part of MN-IECE and an ambassador program for MDH and sit on the committee for MDH as a consultant for homelessness and outreach. I am also part of the Children's Hospital parent group. I sit on many boards and things, but my current job is a parent for kids with special needs and mental health needs. I fight the fight to help speak for families that need someone to speak up.



The Fifth Annual Minnesota Mobile Mental Health Crisis Response Summit “**Compassion. Connection. Community.**” is brought to you by **Metro Children’s Crisis Response Services** with funding from **Minnesota Department of Human Services, Behavioral Health Division**, and technical and design assistance from **Minnesota Association for Children’s Mental Health**.

The purpose of this event is to provide top-notch training to mobile mental health crisis responders and their partners around the state, to ensure that communities are served well, and to elevate mobile mental health crisis response as a field. We’d love to hear from you about how best to build on this and shape the event in 2025!



About Metro Children’s Crisis Response Services

Metro Children’s Crisis Response Services (MetrCCS) is a collaborative across the 7 Minnesota metro counties of Anoka, Carver, Dakota, Hennepin, Ramsey, Scott and Washington, in support of their children’s mental health crisis response teams. MetrCCS’ leadership team is comprised of crisis response teams, hospitals, insurance companies, nonprofit partners, DHS and parents who have experienced the system. While our main focus is on children and families, most of the members of our collaborative also work with adults experiencing a mental health crisis.

Our goals are to:

- Provide top-notch training to mobile mental health crisis responders and their partners around the state to ensure that people experiencing a mental health crisis receive the best possible care.
- Elevate the field of mobile mental health crisis response as a sustainable, skilled profession.
- Build a well-rounded body of on-line training content that mental health crisis workers can access 24/7.
- Knowing that many of you are seeking more depth of content, we have a mix of entry level and more advanced offerings.

See our website for more information about crisis response, and finding your local team: <https://childcrisisresponsemn.org/>



The Minnesota Association for Children’s Mental Health is a nonprofit organization that provides education and resources to families, professionals and youth throughout Minnesota and beyond. Learn more at www.macmh.org.