



MACMH 2024

Year in Review

From Our Director

As we close the chapter on 2024 and look ahead to the promise of 2025, I want to first say, "thank you!" This past year, MACMH continued to grow as a hub for connection, education, and advocacy. Together, we navigated the complex realities of youth mental health in Minnesota and always keeping children, families, and those who serve them at the center.

2024 in Review

We reached thousands across the state—parents, providers, educators, and youth themselves—with training, support, and community:

- **6,078+ professionals** participated in MACMH's professional development offerings
- **1,183+ individuals** received support through our Youth & Family Division
- **51 youth** engaged in our "BE A LDR" program, learning emotional regulation, leadership, and entrepreneurship
- Reflective consultation expanded, with **90+ professionals** participating, including a BIPOC-specific cohort
- Our Infant & Early Childhood Conference has **grown 270%** since 2018
- **\$3.5M+ in revenue** supported this impact, despite closing the year with a modest deficit due to planned investments in growth

We also celebrated the launch of the **Michele Fallon Award**, honoring workhorses in the field of infant and early childhood mental health—those making quiet, transformative impact every day.

Our Vision for 2025: Tell Me Your Story

In 2025, we're leaning into a bold and timely theme: **"Tell Me Your Story."**

This theme is more than a campaign. It's a commitment, a call to action, and a challenge to elevate the lived experiences of those we serve and work beside.

At MACMH, storytelling is a tool for advocacy, healing, and systemic change. It helps us:

- **Amplify unheard voices**—from youth in our programs to parents navigating systems
- **Foster connection**—across disciplines, identities, and geographies
- **Drive policy change**—by centering lived experience in the reform process
- **Build professional networks**—where education is paired with empathy and inclusion

Looking Ahead

2025 is already shaping up to be a year of momentum. From launching our HeartStrings brunch in September to expanding reflective supervision, community trainings, and scholarship access—we're focused on deepening our impact and broadening our reach. But this next chapter isn't just about MACMH. It's about you. Your ideas. Your feedback. Your story. Let's build together. Whether through attending a training, joining a reflective group, collaborating on a project, or simply sharing your experience! We invite you to help shape the future of children's mental health in Minnesota. On behalf of our entire team and Board, thank you for walking with us. Let's make 2025 a year of powerful conversations, courageous advocacy, and collective healing.



Warmly,

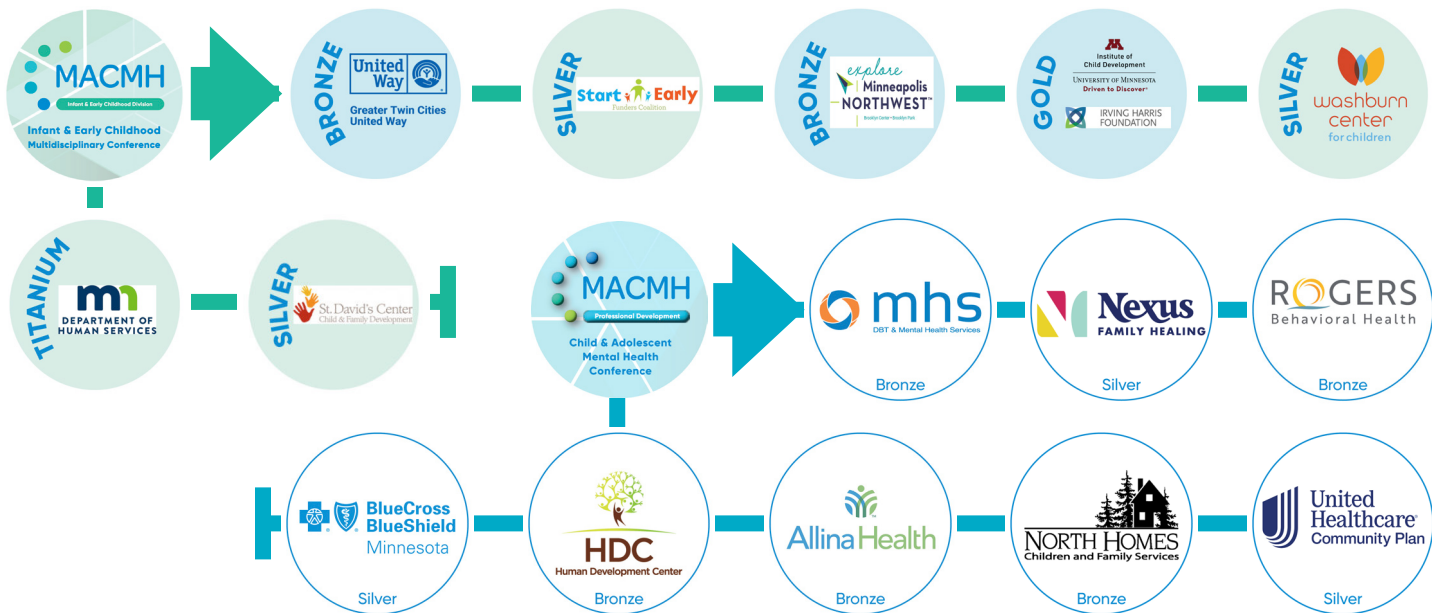
A handwritten signature in black ink that reads "Brandon Jones".

Brandon Jones, M.A. CPPM

Executive Director

Minnesota Association for Children's Mental Health (MACMH)

Thank You Sponsors

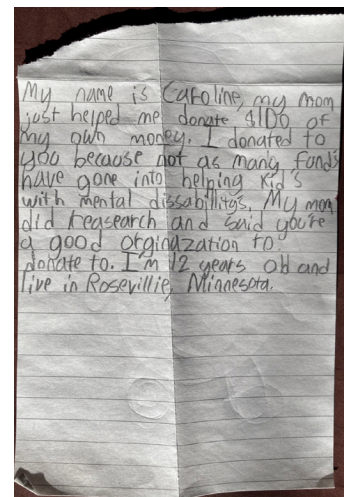


Thank You Donors

Renee Beachler
Joseph Beacom
Jacey Cassem
Katie Eggert
Vicki Eide
The ANIKA Foundation
Joshua Fraenkel
Tricia Genett
Erika Gentry
Paul R Gramstad
Lillian Hall
Janet Hanson
Joel Hetler
Jeff Johnson
Paul Kanikula

Katie Kerber
Melanie Kuha
Leah Kuypers
Anne LaTour
Margaret Leshner
Wade M
Kelly Matsuoka
Laurie Merz
Marcia Milliken
Brandon Moore
Michael Morris
Chris Muske
Dan Porter
Lori Roesler
Shaina Ruder

Richard Scheil
Sharon Schindel
Chad Seth
Terry L Sharratt
Keith and Susan Swaggert
Jessica Weber
Angels Wermerskirchen
Marsha Zuckerman
Mary Miller
Wendy Miller
Amy Smith
Danielle Smith
+ Anonymous Donors



Thank You Partners

Throughout 2024, MACMH was honored to partner with a number of individuals and organizations in our pursuit of optimal mental health from prenatal to young adulthood. Through fiscal hosting, technical assistance, event collaborations, and more, we grew our network and shared in our collective missions to support children and families.

- + RCCMHC (Ramsey County Children's Mental Health Collaborative)
- + Alongside Network
- + MN Department of Human Services
- + MN Department of Education
- + The Alliance for the Advancement of Infant Mental Health
- + Center for Inclusive Child Care
- + Greater Twin Cities United Way's 80x3 Initiative
- + The Sauer Foundation
- + MetrCCs (Metro Children's Crisis Response Services)
- + MN Department of Health
- + Doran Consulting
- + Brightworks
- + HCCMHC (Hennepin County Children's Mental Health Collaborative)
- + Gheorg



Thank You Volunteers

- | | | | |
|------------------------|----------------------|------------------|--------------------|
| Mary Anne Barnhart | Tenzin Dolsel | Pethuel LeFlore | Kimberly Roseman |
| Tabitha Benci DeRango | Wendi Eliason | Maureen Lilleby | Alicia Runquist |
| Bobbi Bjork-Mathiesen | Michele Fallon | Katie Lingras | Michael Schmidt |
| Christine Black-Hughes | Renee Fasteen-Michon | Kristin Malin | Tracy Schreifels |
| Lori Brown-De Alba | Jennifer Fuchs | Stephanie Maki | Carrie Shaughnessy |
| Lindsay Bruce | Rachel Goossens | Laura McCaghy | Maria Shermoen |
| Rachel Burger | Breanna Greenly | Molly McHugh | Molly Snuggerud |
| Nancy Carriveau | Eric Hansen | Corinne McMahan | Kea Sparkman |
| Betty Carlson | Linda Hansen | Nancy Mellesmoen | Kaitlyn Stender |
| Desiree Carvel | Martha Higuera | Alyssa Meuwissen | Tracy Tonner |
| Heather Charmoli | Mikah Holloway | Lucas Morcomb | Addie Trettel |
| Julie Christianson | Ellen Johnson | Lisa Moschkau | Priscilla Weigel |
| Carmen Cook | Michelle Johnson | Sifa Mosiori | Jessica Westby |
| Steve Cook | Denise Kirmis | Molli Nelson | Maija Whitegon |
| Torrie Crider | JoElla Klubberud | Sheri Olson | Susan Williams |
| Naajee Dennis | Kristina Kothrade | Helene Pearson | |
| Michelle Dineen | Margaret LaForge | Katrina Phifer | |
| Colleen Dockendorf | Ron Lake | Abbey Pierce | |

Our Infant & Early Childhood Division

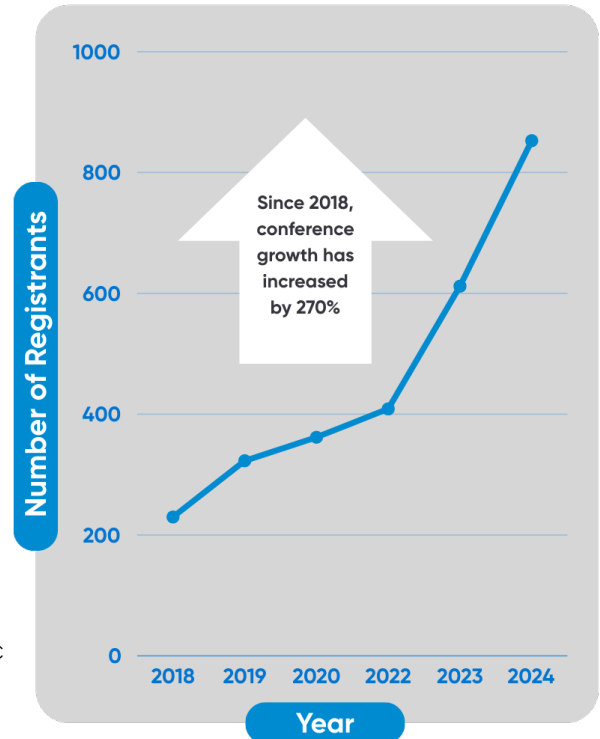
Grounded in the knowledge that the earliest years are critical in shaping lifelong health and wellbeing, our Infant & Early Childhood Division works to build a multidisciplinary workforce equipped to address the unique needs of children, prenatal to age 6, and their families. We pursue these goals in 4 areas: continuing education, membership, endorsement, and reflective consultation.

Infant & Early Childhood Conference

Our main continuing education initiative is our Infant Early Childhood Multidisciplinary Conference. The conference unites a diverse group of professionals from across the state who work with young children, families, and caregivers. Since its inception in 2018, attendance has grown by **270%** over the past six years. As MACMH continues to grow, we are committed to expanding this vital opportunity, reaching even more professionals dedicated to improving the well-being of young children and their families.

Reflective Consultation

In previous years, MACMH has contracted with several counties to provide **Reflective Consultation** to professionals. In 2024, MACMH was able to expand its services and launch **3 reflective groups** for individuals with the support of the Sauer Foundation Grant. Our reflective consultations have been able to support **over 90 professionals** across fields such as early childhood education, public health, health and human services, and more. With one being a dedicated group for BIPOC-identifying providers.



Interested in reflective consultation? Check out our website! Reflective Consultation is open to anyone working with or on behalf of infants, young children, and their caregivers (including those in early care and education, mental health, child protection, public health, etc.), opportunities are available for both individual and agency-wide reflective consultation.

Infant & Early Childhood Division Membership

The Infant and Early Childhood (IEC) Division is designed to be a vibrant community for multidisciplinary professionals who are shaping the field of infant and early childhood mental health in Minnesota. The IEC Division offers membership to all professionals working in the field—no matter your role or background. By joining, you will gain access to valuable professional connections, leadership opportunities, and resources to strengthen your credentials and impact in the workplace.

**Take the next step in your professional journey
—become a member today!**

Benefits for our IEC Division members:

- + Access to our nationally-recognized Endorsement process
- + Access to trainings at a reduced rate
- + Discounts on all purchases in our online store
- + Participation in networking events throughout the year
- + Opportunity to serve on our Advisory Board or join a committee to help further our work supporting professionals like you
- + Membership to the global organization the Alliance for the Advancement of Infant Mental Health



New Michele Fallon Award

"This field is full of humble and unassuming rock star workhorses," Michele Fallon, recent recipient of her new namesake award, said.

To define a workhorse, we look for those who are doing extraordinary things in ordinary settings. The work they're doing is not glamorous; it is challenging. Michele is an exemplary workhorse, and it was with this in mind that the Michele Fallon Award was created.

It was a labor of love to help launch and sustain the Infant & Early Childhood Division of the Minnesota Association for Children's Mental Health. What began as a small, siloed section of MACMH is now a robust, renowned leader in the multidisciplinary infant and early childhood field.

Michele is a former Infant & Early Childhood Division Advisory Board co-chair and recently retired member of MACMH's Board of Directors. With great humility, Michele emphasizes the multifaceted team effort it took, and continues to take, to enhance the programs and vitality of the infant and early childhood work at MACMH.

Michele's impact spans far beyond MACMH. In partnership with the Greater Minneapolis Crisis Nursery, she developed the "Nursery Way" curriculum to support staff in serving children and families impacted by trauma.

She taught in the Infant & Early Childhood Mental Health Program at the University of Minnesota and has been part of the team that developed the Faculty Symposium on embedding infant and early childhood principles into existing curricula across disciplines.

Michele developed trainings for the Department of Human Services and was integral to the launch and expansion of mental health consultation in Minnesota.



In addition to her work in Minnesota, Michele has forged partnerships in other states, including Connecticut, where she and Jane Ellison co-developed an ongoing training about trauma as part of a collaboration between Head Start and Child Protection Services.

We will present the Michele Fallon award to a professional each fall at the Infant & Early Childhood Multidisciplinary Conference. Michele hopes to see it continue to recognize not just thought leaders and rock stars but focus on the invaluable accomplishments and contributions of the workhorses – those who are exceptional in quiet ways.

Our Youth & Family Division

Our Youth & Family Division focuses on three key areas:

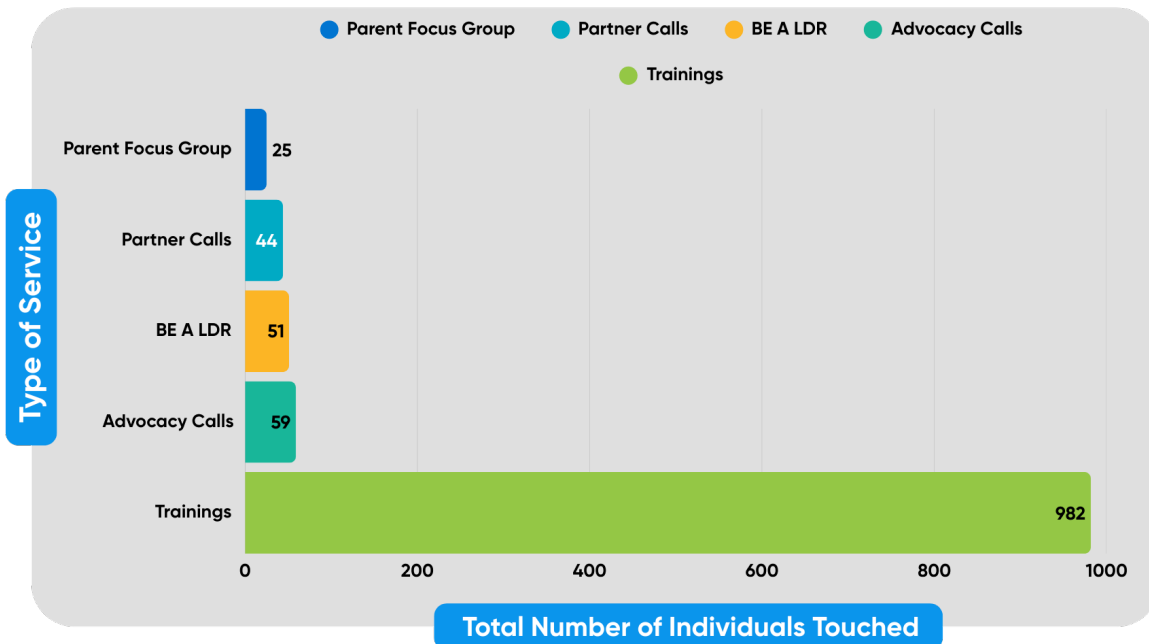
+ Family Education + Family Support + Youth Programming

The main goal of our Youth & Family Division is to build **supportive** relationships with families and caregivers. Through parent programs, assisting caregivers in developing self-advocacy skills, and offering referrals to community resources, MACMH is aiming to strengthen the mental health of all families. We also provide direct advocacy for families by accompanying them at meetings, court hearings, and school IEP meetings.

Additionally, we are proud of our **educational** offerings. At MACMH, we have developed curriculum, both manuals and PowerPoints, as well as presentations to parents/caregivers, youth, educators, mental health professionals, and community members. Our goal is to provide the skills and knowledge necessary to navigate child welfare, mental health, juvenile justice, and education systems.

Overall Department Impact

When factoring in all aspects of our MACMH's Youth & Family Division as a whole—including trainings, parent coaching, advocacy calls, certified peer specialists, and youth programs—we touched the lives of more than **1,183+ individuals!**



Featured Youth Program

The BE A LDR (pronounced “Be A Leader”) program saw its second session during the summer months of 2024. In partnership with the Jerry Gamble Boys & Girls Club, BE A LDR launched in the spring of 2024. Led by MACMH Youth Coordinator Damien Markham, with the goal to teach youth how to **Be Emotionally Aware and Live Dreams Radically (BE A LDR)**. **Since its launch, 51 youth have been involved in this exciting program.**

Each session begins with 10–15 minutes of grounding exercises from Move This World, a social-emotional learning philosophy, that includes activities, discussions, and breathing exercises.

Though functionally led by Markham, the youth set the pace for activities they’re interested in and ways they want to advance their skill sets. **The youth are 55% male, 43% female, and 2% other genders.**

This summer, the group spent several afternoons in the kitchen trying nutritious recipes to support not only their physical health, but also their mental health.

They’d choose a dish they wanted to eat, like pasta, and find a healthy version to learn to make and try. It was during these lessons that they discovered that there are ingredients, such as Red 40, that may be directly related to some mental health symptoms and emotions.

Manufacturing, sales and branding were the other high priority focuses for the group of youth. They took the knowledge Markham had to share and ran with it, problem-solving and exploring what it can mean to be an entrepreneur.

The **88% African American, 8% Caucasian, 4% Indigenous** youth exercised their creative muscles, drafting logos for a clothing line. They practiced using digital transfers, an iron, and heat press to create their items. They then rehearsed elevator pitches and selling points. Finally, they went door to door around their communities, sharing what they’d learned and their new products.

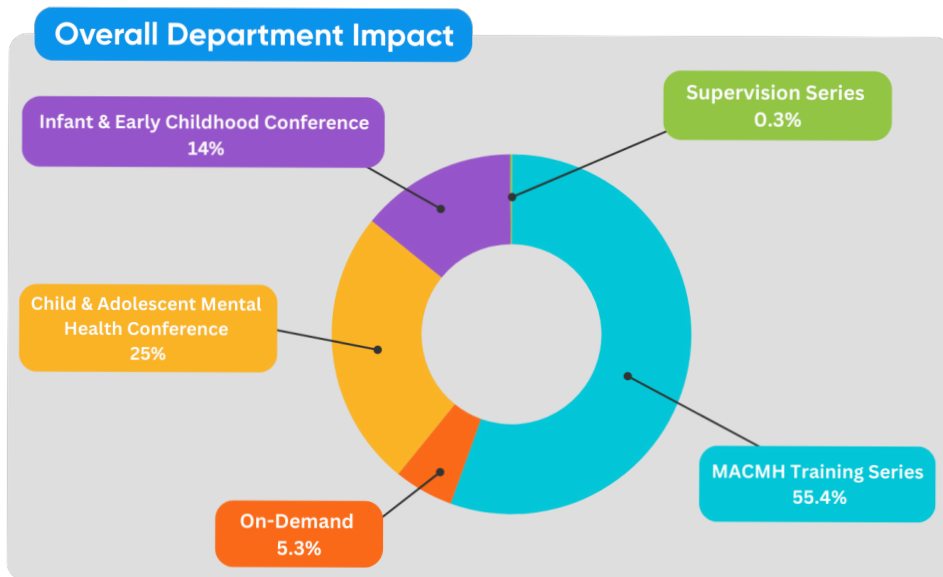


“BeALdr is something that you become more consistent [in], learn how to make your own website, and learn how to...grow up and be responsible on your own. And...make your dream[s] come true.” -2024 Student Participant

Professional Development

To ensure children achieve optimal mental well-being, families and communities we must prioritize their well-being through best practices and continuous learning. At the MACMH, we believe that a skilled, ethical, and culturally-responsive team of professionals is essential to this effort. By equipping individuals from all disciplines with the knowledge and tools they need, we strengthen our collective capacity to support and uplift children and families across the state.

MACMH's Professional Development Department is more than just a continuing education program; it's a catalyst for transformation in the mental health field. Every year, **over 6,000 caregivers and professionals** benefit from our resources, referrals, and educational offerings, making a tangible difference in the lives of infants, children, and adolescents. Our board-approved continuing education programs cover a wide range of topics, including clinical skills, cultural competency, ethics, and supervision—providing participants with the tools they need to create lasting impact.



Overall Department Impact

By the end of 2024, the Professional Development Division reached 6,078+ individuals

Department Services

- +MACMH Training Series
- +On-Demand Trainings
- + Infant Early Childhood Multidisciplinary Conference
- +Child & Adolescent Mental Health Conference

Our Annual Child & Adolescent Mental Health Conference

Every year, MACMH hosts one of the largest conferences of its kind in the country – we welcome teachers, therapists, psychiatrists, counselors, social workers, infant and early childhood professionals, health care workers, parents and all others who support children prenatal to age 24.

Harmony in Connection: Nurturing Mental Wellness Together

The theme of the 2024 conference, “Harmony in Connection: Nurturing Mental Wellness Together,” highlights the importance of coming together to create harmonious environment that supports the mental well-being of our children. By fostering connections and collaboration, we can make a lasting impact on the lives of the youngest members of our community. Over the three-day conference, connections were made, knowledge was shared, and a shared vision for supporting young minds came to life!



By the Numbers

1,520

professionals, family members, and caretakers were registered

80

workshops addressing children’s mental health were held

3

keynotes spoke on how to create safe spaces for both children and professionals

73

exhibitors tabled at the conference sharing the impactful work they do

10

sponsors helped make the conference possible

30

scholarships were awarded, removing financial barriers and expanding access for attendees

Supervision Series

The MACMH Supervision Series is a 15-week online training program designed for eligible participants who wish to become board-recognized supervisors for mental health practitioners from underrepresented communities seeking licensure. By completing this program, professionals gain the knowledge and tools to become a culturally responsive supervisors, ready to support students and new graduates. This training is offered with grant support from the Minnesota Department of Health Office of Rural Health and Primary Care.

The grant goal is to have 60 trainees complete the training by Dec 2026. Currently, 11 professionals have completed the course. By the end of 2025, MACMH hopes to have 30 more complete the training!

Interested or Know Someone Intersted?

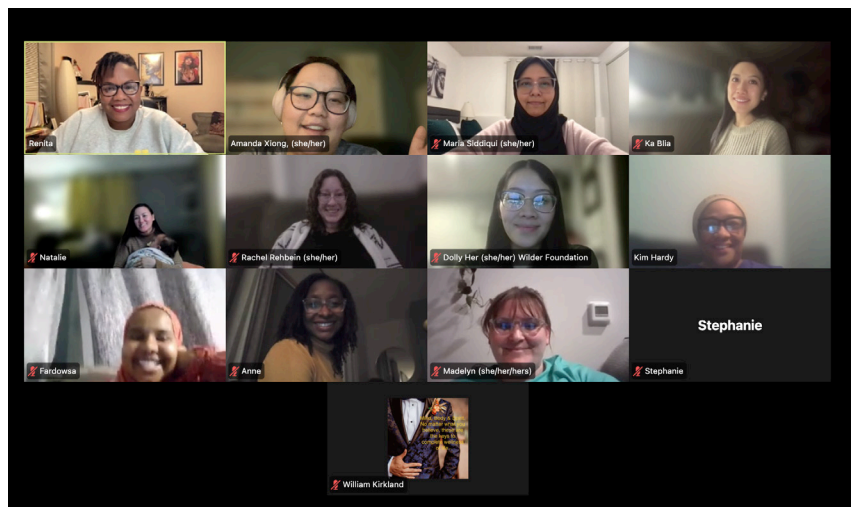
For Eligibility, participants must:

- + be Minnesota residents
- + be LPCC, LISW, LMFT, or LP holders
- + be members of an underrepresented community as defined by Minnesota State Statute section 148E.010, Subd.20
- + agree to deliver at least 25% of their yearly patient encounters to state public program enrollees or patients receiving sliding fee schedule discounts

Upon completing the 15-week training program, participants will receive a stipend of \$1,000.

For more information, please refer to our website:
macmh.org/macmh-supervision-series.

"I had a very positive experience in the MACMH Supervision Series! The content of our live lectures was carefully thought out, and special attention was given to issues of identity and culture throughout the series. I was so pleasantly surprised at how connected I felt to other members of the cohort and to Renita. I felt that Renita really cared about us, and that I got to know the members of the cohort well! I would definitely recommend this series to others who are preparing to become supervisors. I am very grateful to have been selected for the first cohort." -2024 Participant



MACMH's 2024 in a Snapshot

7,621

individuals reached by
MACMH across all
departments

1,716

total people touched by
free workshops and
awarded scholarships

167

trainings held across all
departments for professionals,
parents, and youth

3,369

people attended our
trainings

2,373

individuals attended
MACMH conferences

1,183

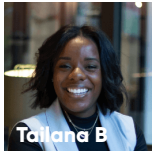
and more were reached by
our Youth & Family Division



	TOTAL
Revenue	
1100 Interest Earned	465.21
4000 Registration	821,056.32
4010 Publications	9,667.40
4020 Memberships	5,050.00
4030 Exhibitor	13,255.00
4070 Reflective Practice	13,780.00
4080 Advertising	1,600.00
4100 Contributed income	
4110 Donations	12,450.60
4115 Sponsorships	183,620.00
4200 Government grants & contracts	2,140,976.96
Total 4100 Contributed income	2,337,047.56
4300 Investment income	367,105.13
4400 Sales of Product Revenue	502.99
4500 Services	7,742.62
4510 Training	4,004.00
Total 4500 Services	11,746.62
Total Revenue	\$3,581,276.23
GROSS PROFIT	\$3,581,276.23
Expenditures	
5100 Advertising & marketing	66,268.75
5200 Awards & grants to others	63,687.29
5230 Stipends	12,121.25
5240 Gifts	7,796.33
5300 Insurance	5,682.89
5400 Interest paid	-11.02
5500 Office expenses	161,963.96
5580 QuickBooks Payments Fees	2,107.33
6000 Payroll expenses	1,308,323.45
6100 Contract & professional fees	1,638,146.23
6190 Staff Training	11,170.00
6195 Training	153,144.96
6210 MACMHcon Supplies	276.23
6240 Grant Supplies	23,942.41
6400 Occupancy	159,238.94
6600 Travel	62,804.03
6660 Entertainment Meals	2,165.07
6710 Organization Memberships	850.00
6750 Sales and Use Tax	429.62
Total Expenditures	\$3,680,107.72
NET OPERATING REVENUE	\$ -98,831.49
NET REVENUE	\$ -98,831.49



Amanda A



Tallana B



Grace C



Deborah C



Hannah R



April T



Libby F



Connie H



Brandon J



Abbey J



Hannah C



Cidney V



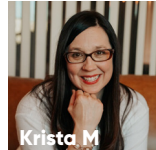
Amanda X



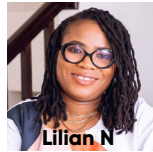
Karen M



Lauren M



Krista M



Lilian N



Damien M



Titus S



Mark R



Pa Ia X

Our Staff

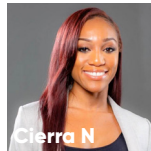
Our Board



Michele F



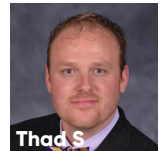
Liz F



Cierra N



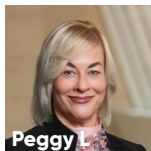
Phil K



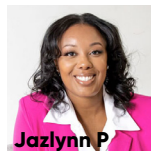
Thad S



Tawnya H



Peggy L



Jazlynn P



Dan P



Corni S



Suzanne R

We Are Your Professional Home

We are continually inspired by the passion of those who seek to learn, grow, and support the mental health of young people. You are the reason we devote our time to building and offering continuing education, training and resources.



Support our mission

When we invest in professionals and caregivers, we're investing in the **mental health and well-being of children and youth across Minnesota and beyond**. With more support, we could extend our reach and come closer to fulfilling our mission: **to promote and pursue optimal mental health for all from infancy to young adulthood**.

As we look ahead, we remain committed to **gathering and sharing the powerful stories** of our work—stories of resilience, growth, and impact that reflect our mission in action. Through this annual report, we invite you to dive deeper into the lives touched by MACMH. Looking forward, we are turning our focus to **expanding scholarship funding**—with a spotlight on this effort at our upcoming **"HeartStrings"** brunch event in **September**. *With your continued support, we can open more doors, reach more communities, and move closer to a world where every child and young adult has access to the mental health resources and support they deserve.*

As we move through 2025, we are looking to hear from you. Tell us about programs, projects, resources or trainings and any other way we can support you. On the other hand, you may have a story of how we have helped you in the past. Whatever it is, we'd like to listen to your story.

"The presentation was awesome and wonderful and amazing. I have a young adult son on the Autism Spectrum and in the past two years have myself been diagnosed with Neuro-Diversity. This all tracks and validates and gives me even more phrases and approaches to use in life and with my patients as well! I hope you can have her back again to do more!!!"
-Health Care Professional about our training on 8/16/24



Share your story



23 Empire Drive, Suite 1000
Saint Paul, MN 55103

At the Minnesota Association for Children's Mental Health (MACMH), our mission is to promote and pursue optimal mental health from infancy to young adulthood.

Learn more about our work and what we've been up to at www.macmh.org or email info@macmh.org or call us at 651-644-7333

Leading with compassion, knowledge and support